

FireJet™ FJ601

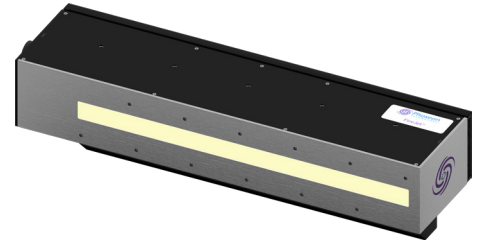
Product Specifications



Phoseon UV LED SLM™ Technology

Phoseon Technology is the world leader in providing UV LED solutions for commercial and industrial applications. Phoseon's products deliver superior performance and real-world reliability for UV curing of adhesives, coatings and inks.

Phoseon's patented Semiconductor Light Matrix (SLM)™ technology encapsulates LEDs, arrays, optics and cooling to maximize UV LED curing performance. The FireJet light source is for use in high-performance curing.



Performance

Wavelength	395 nm				
Peak Irradiance	16 W/cm ²				
Emitting Window (mm)	225x20	300x20	375x20	450x20	525x20
48V Power In (Max)	1824W 38A	2496W 52A	2976W 62A	3600W 75A	4176W 87A

Light Source Setup

Replaceable Air Filters:

- Phoseon PN 34991 (225x20mm: Pack of 5)
- Phoseon PN 34992 (300x20mm: Pack of 5)
- Phoseon PN 34993 (375x20mm: Pack of 5)
- Phoseon PN 34994 (450x20mm: Pack of 5)
- Phoseon PN 34995 (525x20mm: Pack of 5)

Air Intake (top)
Minimum Clearance: 50mm



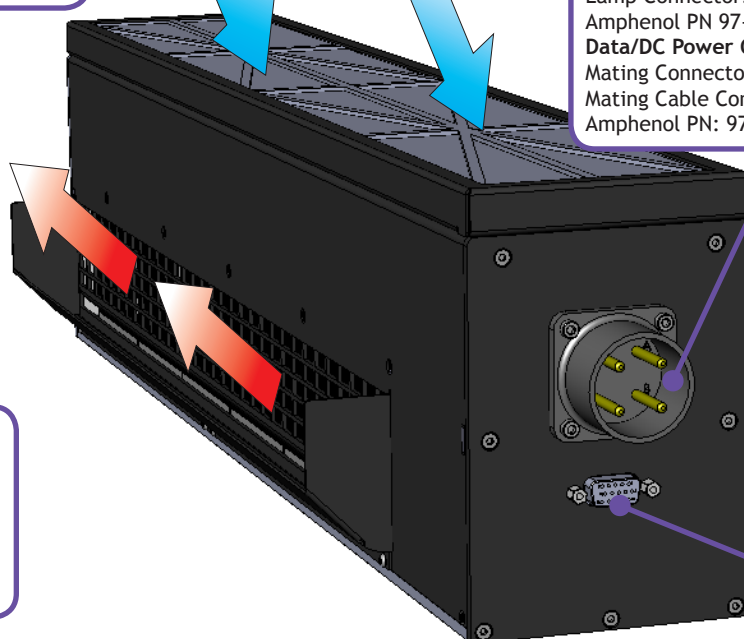
DC Input Power: 48±1Vdc
Lamp Connector:
Amphenol PN 97-3102A2222P621
Data/DC Power Cable:
Mating Connector: Phoseon PN 34996
Mating Cable Connector:
Amphenol PN: 97-3106A2222S621

Air Exhaust (side)
Minimum Clearance: 50mm

Operating Environment:

- Indoor use only
- Temperature: 10 to 40 °C
- Humidity: <80% non-condensing for temperatures up to 30 °C
- Altitude: up to 3,000 m
- Storage Temperature: -20 to 85 °C

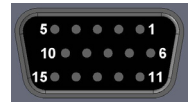
Interface:
PLC Interface
through
HD-DB-15



PLC Interface

The female HD-DB-15 connector is used to control the light source via PLC.

Data Connector



1	Do Not Use	5	Lamp Ready: (24V PLC Output) 0 to 6V (ground) = Not Ready <i>or</i> 16 to 24V (open) = Ready Internal resistive load on this Pin is 1.3k Ω Sink Current Maximum = 6mA Should be connected to high impedance input	11	Do Not Use
2	Intensity Control: (Voltage Input) 0.1V = 1% of full power 10V = 100% of full power Minimum internal resistive load = 125k Ω	6*	Do Not Use	12*	Do Not Use
3	Enable High: (24V PLC Input) 0 to 6V (ground/open input) = OFF <i>or</i> 16 to 24V = ON Minimum internal resistive load = 125k Ω	7	Ground	13*	Do Not Use
4	Segment Control: (Voltage Input) 0V = 100% of Lamp Enabled 2-10V = Disables right and left SLMs Minimum internal resistive load = 125k Ω	8	Ground	14	Ground
		9	Ground	15	Temperature Monitor: (Voltage Output) Voltage proportional to SLM heat sink temperature 0.1V = 1°C This value should not exceed approximately 8V
		10	Ground		

*Leave these Pins open (unconnected).

Dimensions

Units of measurement: mm

FJ601					
UV Emitting Window	225x20	300x20	375x20	450x20	525x20
Length (L)	351	426	501	576	651
Width (W)	120	120	120	120	120
Height (H)	145	145	145	145	145
Weight (kg)	TBD	TBD	TBD	5.90	TBD
# Mounting Points (each side)	3	4	4	5	6
Overall Dimensions (LxWxH)	351x120x145	426x120x145	501x120x145	576x120x145	651x120x145

